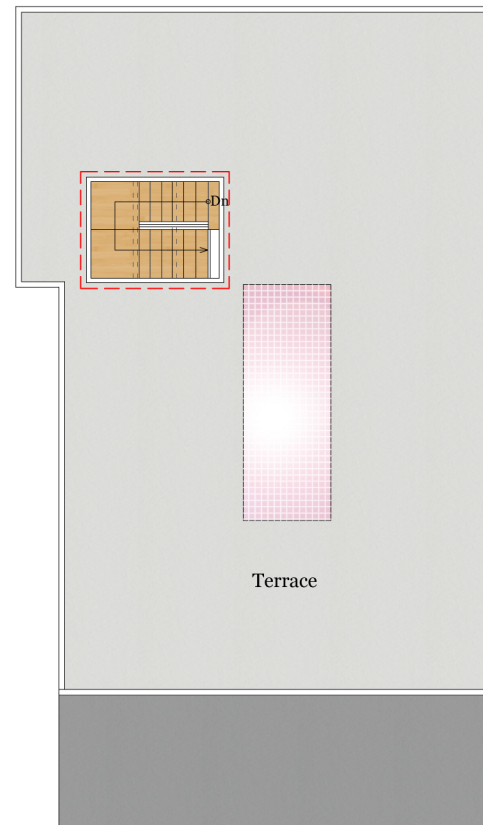


**THIRD FLOOR**  
2,025 SQ FT



**ROOFTOP TERRACE**  
75 SQ FT

**Total Finished Floor Area**  
**Square Footage: 6,685 SQ FT**

Above-Grade: 6,270 SQ FT Below-Grade: 415 SQ FT  
 +Additional 1,050 SQ FT 4-Car Garage on Lower Level  
 +Additional 235 SQ FT Storage on Lower Level  
 +Additional 350 SQ FT Mech Room on Lower Level

Measured per **ANSI** Standard Z765-2021.  
 Total Finished & Unfinished Floor Area SQ FT: 8,320 SQ FT



Single Family



6,685



4-Car Garage



4 Bedrooms + 1 Office



3 Baths + 2 1/2 Baths

Holly Khouw  
 Tel: 415.444.6403  
[holly@applegarthwarrin.com](mailto:holly@applegarthwarrin.com)  
 LIC: #01478076

Kara Warrin  
 Tel: 415.407.7979  
[Kara@AW-Marin.com](mailto:Kara@AW-Marin.com)  
 LIC: #01882747